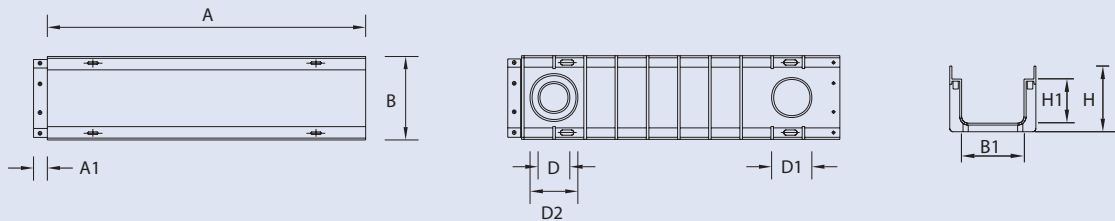
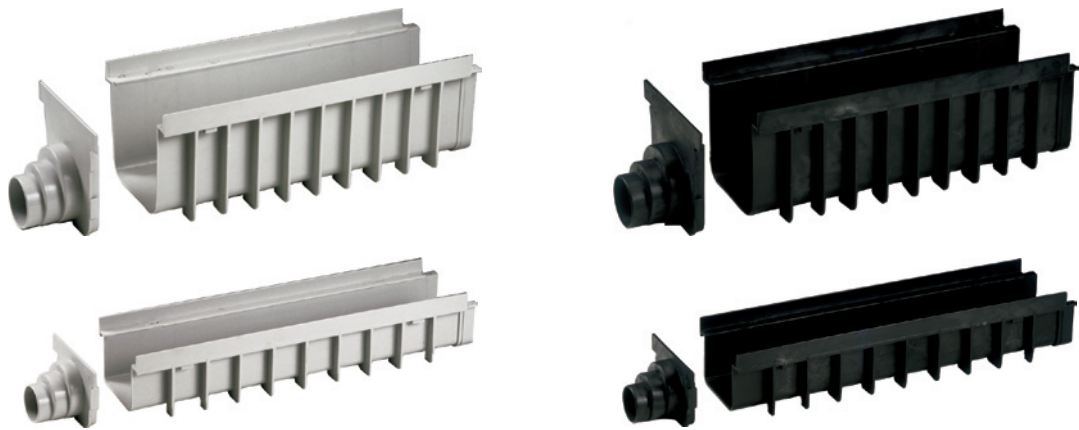


# Channels

## Polypropylene Modular Channel with End Cap

The modular channel is manufactured in polypropylene, and is designed with high resistant reinforcement side-ribs that strengthens every single element. It consists of 500mm long elements that connect each other by no joints and each element is provided with three vertical water outlets for three different diameters.



| Channel Dimensions |     |    |     |     |    |    |     |     |     |        |
|--------------------|-----|----|-----|-----|----|----|-----|-----|-----|--------|
|                    | A   | A1 | B   | B1  | D  | D1 | D2  | H   | H1  | Colour |
| WC100G             | 500 | 20 | 133 | 95  | 50 | 63 | 75  | 100 | 67  | Grey   |
| WC185G             | 500 | 20 | 206 | 153 | 75 | 90 | 110 | 185 | 143 | Grey   |
| WC100B             | 500 | 20 | 133 | 95  | 50 | 63 | 75  | 100 | 67  | Black  |
| WC185B             | 500 | 20 | 206 | 153 | 75 | 90 | 110 | 185 | 143 | Black  |

| End Cap Dimensions |           |             |        |
|--------------------|-----------|-------------|--------|
|                    | Size      | Exit        | Colour |
| WEC130G            | 130 x 500 | Ø 50-63-75  | Grey   |
| WEC200B            | 200 x 500 | Ø 75-90-110 | Grey   |
| WEC130B            | 130 x 500 | Ø 50-63-75  | Black  |
| WEC200B            | 200 x 500 | Ø 75-90-110 | Black  |

